

Heart of the Wolds Sportive

Sunday 26th April 2015



Accommodation

Below is an introductory list of accommodation in and around Driffield. It is not exhaustive or in any way a recommendation. More places can be found on well known accommodation websites such as Trip Advisor etc. We have firstly listed those establishments who have directly supported our event and then listed others in order of proximity to Driffield Showground. All information is given to the best of our knowledge, but we advise contact with the accommodation for more information.

Featured Accommodation

Featured Accommodation: Rudstone Walk

Rudstone Walk is located in its own 80 acres in a stunning country location on the edge of the Yorkshire Wolds. It is a memorable and inspiring base for a cycling break in the Yorkshire Wolds, literally in the shadow of the Cote De Newbald.

There is ample parking, secure cycle lock up and washing facilities for your 2-wheeled friend. Dining is available 7 nights a week from 6pm and includes succulent Givendale Rib Eye Steak, Oven Baked Cod, Sizzling Salmon Salad, Baked Aubergine with a Walnut Salsa, Lamb Tagine, Steak Pie and of course a delicious roast on a Sunday.

Indulge in a cooked to order breakfast - we are more than happy to adapt the offering for any pre-event requirements. The offering includes fruit, cereal, porridge, fresh juices and of course a delicious locally sourced full English breakfast. Packed lunches are available on request. Laura and Charlie are keen runners, cyclists and outdoor enthusiasts and know the area exceedingly well. A warm welcome, a great night's sleep, delicious Yorkshire hospitality awaits all the guests to Rudstone Walk.

Phone 01430 422230 or email rooms@rudstone-walk.co.uk. Please do follow us on Twitter and facebook for latest offers and specialist events.

Wolds Events comments: *"Laura is a well known face on the local sports scene and her accommodation is superbly located for any ride into the Wolds."*



Heart of the Wolds Sportive

Sunday 26th April 2015



Red Lion

Location: Middle Street, Driffield

Website/Tel: www.theredliondriffield.co.uk / 01377 255907

Prices/Comments: From £35 per person



Best Western Bell Hotel

Location: Market Place, Driffield

Website/Tel: www.bestwestern.co.uk/hotels

Prices/Comments: From £77



Hotel 41

Location: Driffield

Website/Tel: www.hotelfortyone.co.uk / 07734 859058

Prices/Comments: A new stylish 14 bed boutique hotel with twins from £60.



Highfield Farm

Location: Southburn (6 miles South of Event HQ)

Website/Tel: www.highfieldfarm.co.uk / 01377 227723

Prices/Comments: See website for more details

Wolds Events comments: *"We have used Highfield Farm as a base for some of our rides and can recommend the friendly welcome and hospitality of Alison and her team."*



The Old Mill

Location: Langtoft (8 miles North of Event HQ)

Website/Tel: www.old-mill-hotel.co.uk / 01377 267284

Prices/Comments: Family run country hotel, Singles from £65
Doubles from £95

Heart of the Wolds Sportive

Sunday 26th April 2015



Blue Bell Hotel

Location: Burton Agnes (8 miles North East of Event HQ)

Website/Tel: www.bluebellhotel.net / 01262 490050

Prices/Comments: Country hotel, £82 per room based on two people sharing



Greenwick Farm

Location: Huggate (8 miles West of Event HQ)

Website/Tel: www.greenwickfarm.co.uk / 01377 288122

Prices/Comments: Call to find rates

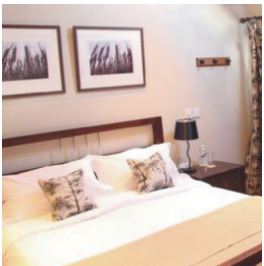


Triton Inn

Location: Sledmere (8 miles North West of Event HQ)

Website/Tel: www.thetritoninn.co.uk / 01377 236078

Prices/Comments: From £75.00 for a double room including breakfast.



Village Farm and Breakfast

Location: Skipsea (11 miles East of Event HQ)

Website/Tel: www.villagefarmskipsea.co.uk / 01262 468479

Prices/Comments: Single rooms £60.00 per night, Double rooms £80.00 per night



The Wold Cottage

Location: Wold Newton (14miles North of Event HQ)

Website/Tel: www.woldcottage.co.uk / 01262 470696

Prices/Comments: 5 star luxury comfort in Georgian period house. Plus very close to Yorkshire's most famous meteorite!