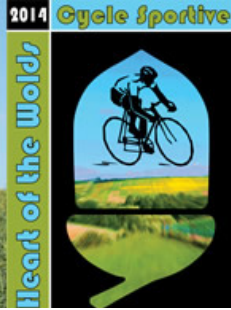


# Heart of the Wolds Sportive

## Sunday 27th April 2014



### Accommodation

---

Below is an introductory list of accommodation in and around Driffield. It is not exhaustive or in any way a recommendation. More places can be found on well known accommodation websites such as Trip Advisor etc. We have firstly listed those establishments who have directly supported our event and then listed others in order of proximity to Driffield Showground. We have shown approximate prices which are largely accurate to the best of our knowledge.

### Featured Accommodation



#### *Highfield Farm*

**Location:** Southburn (6 miles South of Event HQ)

**Website/Tel:** [www.highfieldfarm.co.uk](http://www.highfieldfarm.co.uk) / 01377 227723

**Prices/Comments:** See website for more details

Recently converted from a former farmstead, Highfield Farm now boasts nine 4-star silver rated Bed & Breakfast rooms and Conference Facilities. With private farmland to all sides you are assured a peaceful stay. Highfield Farm is also home to the award winning Yorkshire Wolds Cookery School which offers a range of classes to suit all abilities and tastes.

# Heart of the Wolds Sportive

Sunday 28th April 2013



## *Red Lion*

Location: Middle Street, Driffield

Website/Tel: [www.theredliondriffield.co.uk](http://www.theredliondriffield.co.uk) / 01377 255907

Prices/Comments: From £35 per person



## *Best Western Bell Hotel*

Location: Market Place, Driffield

Website/Tel: [www.bestwestern.co.uk/hotels](http://www.bestwestern.co.uk/hotels)

Prices/Comments: From £77



## *Hotel 41*

Location: Driffield

Website/Tel: [www.hotelfortyone.co.uk](http://www.hotelfortyone.co.uk) / 07734 859058

Prices/Comments: A new stylish 14 bed boutique hotel with twins from £60.



## *The Beeches*

Location: Skerne (2.5 miles South East of Event HQ)

Website/Tel: [www.thebeechesskerne.co.uk](http://www.thebeechesskerne.co.uk) / 01377 254073

Prices/Comments: Working farm with lodge and cottage accomodation



## *The Old Mill*

Location: Langtoft (8 miles North of Event HQ)

Website/Tel: [www.old-mill-hotel.co.uk](http://www.old-mill-hotel.co.uk) / 01377 267284

Prices/Comments: Family run country hotel, Singles from £65  
Doubles from £95

# Heart of the Wolds Sportive

Sunday 28th April 2013



## ***Blue Bell Hotel***

**Location:** Burton Agnes (8 miles North East of Event HQ)

**Website/Tel:** [www.bluebellhotel.net](http://www.bluebellhotel.net) / 01262 490050

**Prices/Comments:** Country hotel, £82 per room based on two people sharing



## ***Life Hill Farm***

**Location:** Between Wetwang and Sledmere (8 miles North West of Event HQ)

**Website/Tel:** [www.lifehillfarm.co.uk](http://www.lifehillfarm.co.uk) / 01377 236224

**Prices/Comments:** Call to find rates

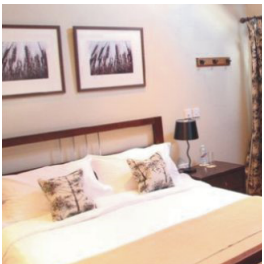


## ***Triton Inn***

**Location:** Sledmere (8 miles North West of Event HQ)

**Website/Tel:** [www.thetritoninn.co.uk](http://www.thetritoninn.co.uk) / 01377 236078

**Prices/Comments:** From £75.00 for a double room including breakfast.



## ***Village Farm and Breakfast***

**Location:** Skipsea (11 miles East of Event HQ)

**Website/Tel:** [www.villagefarmskipsea.co.uk](http://www.villagefarmskipsea.co.uk) / 01262 468479

**Prices/Comments:** Single rooms £60.00 per night, Double rooms £80.00 per night



## ***The Wold Cottage***

**Location:** Wold Newton (14 miles North of Event HQ)

**Website/Tel:** [www.woldcottage.co.uk](http://www.woldcottage.co.uk) / 01262 470696

**Prices/Comments:** 5 star luxury comfort in Georgian period house. Plus very close to Yorkshire's most famous meteorite!